



LOS ANGELES COUNTY
Parks & Recreation
Life. Enjoyed.

SUPERVISOR SOLIS AND DIRECTOR GARCIA-GONZALEZ



NATURE HIKE HOSTED BY NATURE FOR ALL DECEMBER 10, 2022



NATURE HIKE HOSTED BY NATURE FOR ALL DECEMBER 10, 2022

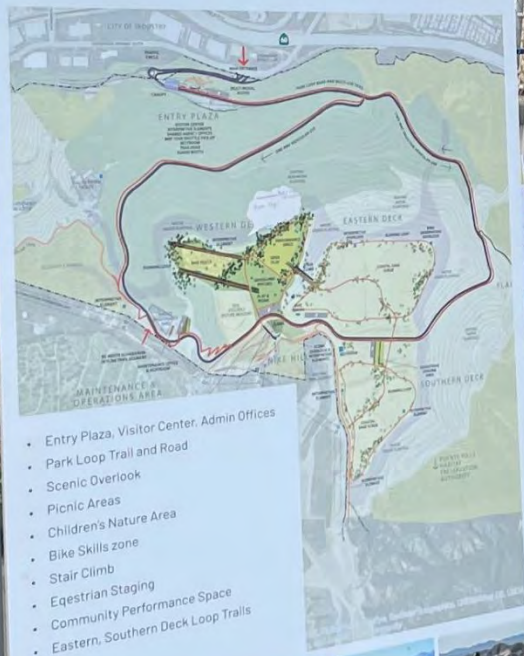


NATURE HIKE HOSTED BY NATURE FOR ALL DECEMBER 10, 2022

PARKS AFTER DARK
Miravillas de Invierno
DICIEMBRE 2 y 17

PUENTE HILLS LANDFILL PARK

What ideas do you like best in the Master Plan? What needs explaining?



- Entry Plaza, Visitor Center, Admin Offices
- Park Loop Trail and Road
- Scenic Overlook
- Picnic Areas
- Children's Nature Area
- Bike Skills zone
- Stair Climb
- Equestrian Staging
- Community Performance Space
- Eastern, Southern Deck Loop Trails



STUDIO
MLA
#Park4All

LANDFILL PARK
MUST be included in

ation
& Outdoor Fitness
Diverse New Audiences
n + Habitat
ectivity
inability
sal Accessibility
ation
erience
& Landfill Operations

#Park4All

County of Los Angeles
Public Health



TRAIL INTERCEPTS WITH ACTIVE SGV JANUARY 6, 2023



ACTIVE SGV

LANDFILL PARK
Are you about this park?

TRAIL POPUP WITH ACTIVE SGV JANUARY 7, 2023



RIAIR
10,90

HIGH VOLTAGE
INSIDE-KEEP OUT

TRAIL POPUP WITH ACTIVE SGV JANUARY 7, 2023



NATURE HIKE HOSTED BY NATURE FOR ALL DECEMBER 10, 2022

“Today marks a special moment in our fight for environmental justice. Having grown up in La Puente, I can still remember the smells that the landfill emitted throughout my family’s neighborhood. It has been 6 years since the Puente Hills Landfill Park Master Plan was completed, and 9 years since the landfill closed. Our communities have waited far too long for this park. Today is the day we make it a reality.”

Supervisor Hilda Solis



Los Angeles County Supervisor

HILDA L. SOLIS

SUPERVISOR SOLIS AND PUBLIC WORKS ASSISTANT DIRECTOR NYIVIH

An aerial night photograph of a city, showing a dense network of lights from buildings and streets. A river or canal winds through the city, reflecting the lights. The overall scene is a vibrant, illuminated urban landscape.

Studio-MLA Design Principles

THINK HOLISTICALLY ACROSS DISCIPLINES

PLAN, DESIGN AND BUILD FOR EQUITY

WORK WITH NATURE

EVOLVE FROM SINGLE PURPOSE TO MULTI PURPOSE SYSTEMS

THINK BEYOND OUR LIFETIMES

ADVOCACY BY DESIGN

LANDSCAPE MATTERS
WATER MATTERS
AIR MATTERS
ECOLOGY MATTERS
PARKS MATTERS
PEOPLE MATTER
BLACK LIVES MATTER
DESIGN MATTERS

VISTA HERMOSA NATURAL PARK

ADVOCACY BY DESIGN

LANDSCAPE MATTERS
WATER MATTERS
AIR MATTERS
ECOLOGY MATTERS
PARKS MATTERS
PEOPLE MATTER
BLACK LIVES MATTER
DESIGN MATTERS

PUBLIC GARDENS AT LA COUNTY NATURAL HISTORY MUSEUM

ADVOCACY BY DESIGN

LANDSCAPE MATTERS
WATER MATTERS
AIR MATTERS
ECOLOGY MATTERS
PARKS MATTERS
PEOPLE MATTER
BLACK LIVES MATTER
DESIGN MATTERS

LA RIVER REVITALIZATION MASTER PLAN

CONNECTING PEOPLE TO NATURE

WORKING AT ALL SCALES / ACROSS CALIFORNIA





**INTERNATIONAL WOMENS DAY
WOMEN RULE!**

ACTIVESGV

STUDIO-MLA
◀THE ROBERT GROUP▶

KDI

 NATURE
FOR ALL
PROTECT • CREATE • CONNECT

40+ TEAM MEMBERS ARE HERE

(12) SPANISH SPEAKERS (2) MANDARIN (1) KOREAN

EASTERN DECK

SOUTHERN DECK

NIKE HILL

WESTERN DECK

LET'S DESIGN THIS PARK!!

DRONE IMAGE LOOKING SOUTH

1994

County Supervisor Hilda Solis Authors Legislation Requiring That The Puente Hills Landfill Be Converted To A Public Park After Its Closure,

2023

Department of Parks and Recreation and Studio-MLA Kick-Off A Robust Outreach Plan, Collaborating with The Robert Group, Kounkey Design Initiative, Nature For All, and Active-SGV

2020

Los Angeles County Files Legal Challenge Seeking Funding From The Sanitation Districts For The Park's Construction

2022

The Los Angeles County Board of Supervisors Reallocate The Funds From Diamond Bar Golf Course And Approve \$28 Million To Build The Park

2016

Puente Hills Landfill Park Master Plan Envisions Over 100 Acres of Future Green Space, Unanimously Approved by the Los Angeles County Board of Supervisors

Department of Parks and Recreation Announces Plan For Design and Construction, Hires Studio-MLA to Lead Design and Engagement

2021

The Los Angeles County Metropolitan Transportation Authority Sells 9.13 Acres of Diamond Bar Golf Course For \$28,250,000

2013

Puente Hills Landfill Closes, Continues Material Recovery Management and Energy Capture

Settlement of Los Angeles County's Lawsuit Against The Sanitation Districts Approved By The Board of Supervisors



2016 Master Plan Recap



5 community workshops

with Spanish, Mandarin and Korean translation

Youth Ambassador program @
8 high schools

16,500
mailers

Technical
Advisory
Committee

Flyers to schools,
community centers,
churches

70+ social
media posts

**Over 1,467 public
supporters**

46 EIR letters, 294 online and
1,127 paper petition signers

**Over 435 bike park
& trail system supporters**

18

Stakeholder
Interviews

26

outreach
presentations

875

e-mail blast
subscribers

PROJECT GOALS

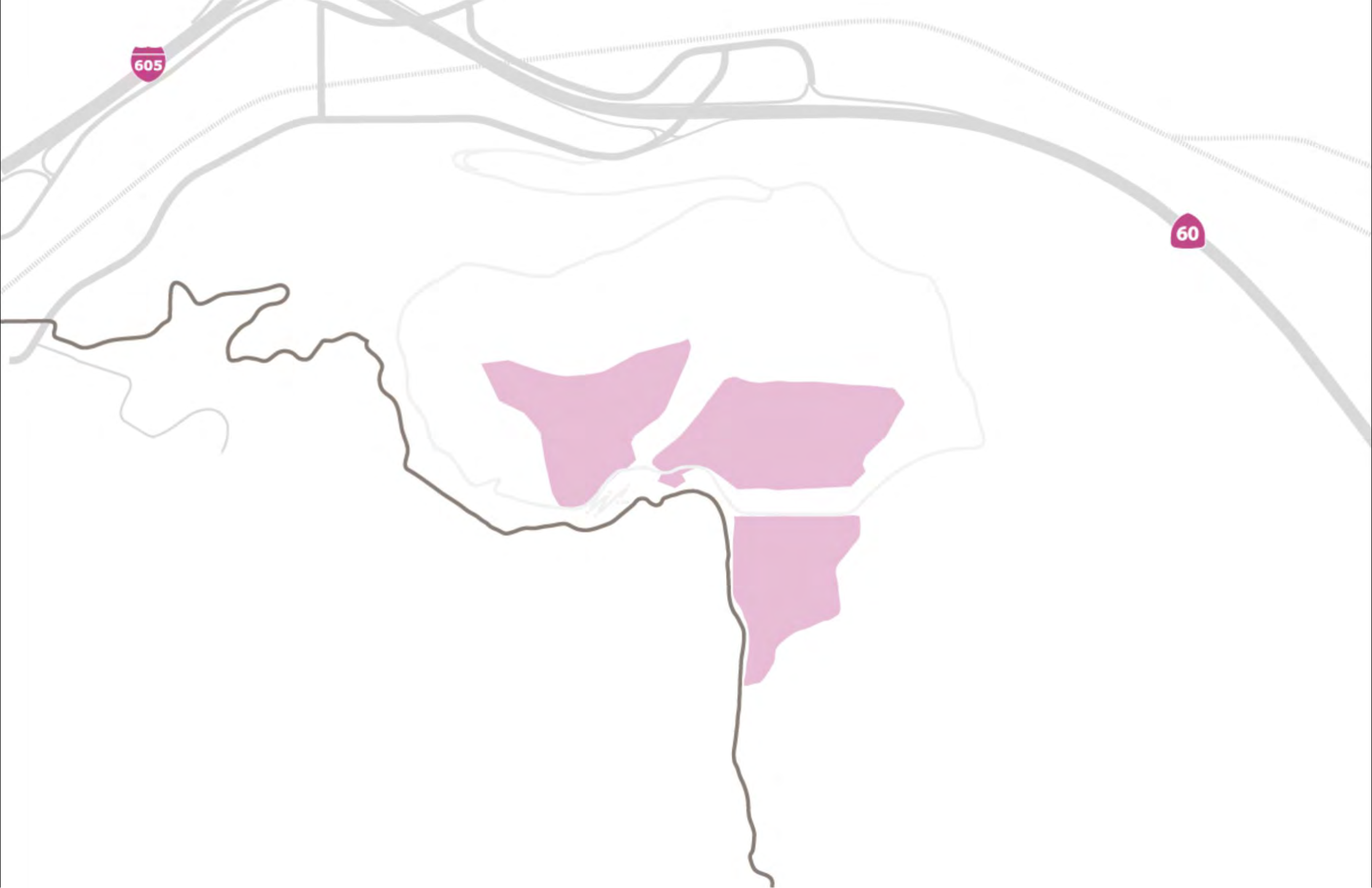
**PARK FOR ALL
GATEWAY TO NATURE FOR DIVERSE AUDIENCES
UNIQUE REGIONAL DESTINATION - AN EXPRESSION OF PLACE
RANGE OF ACTIVITIES + PROGRAM INTEGRATED WITH NATURE
INNOVATION IN STAINABILITY + TECHNOLOGY EFFECTIVE MOBILITY + ACCESSIBILITY
PROMOTES WELLBEING, EDUCATION, AND STEWARDSHIP**

2016 Master Plan Recap

Approved by the Board of Supervisors October 25, 2016
FINAL PEIR – September 2016



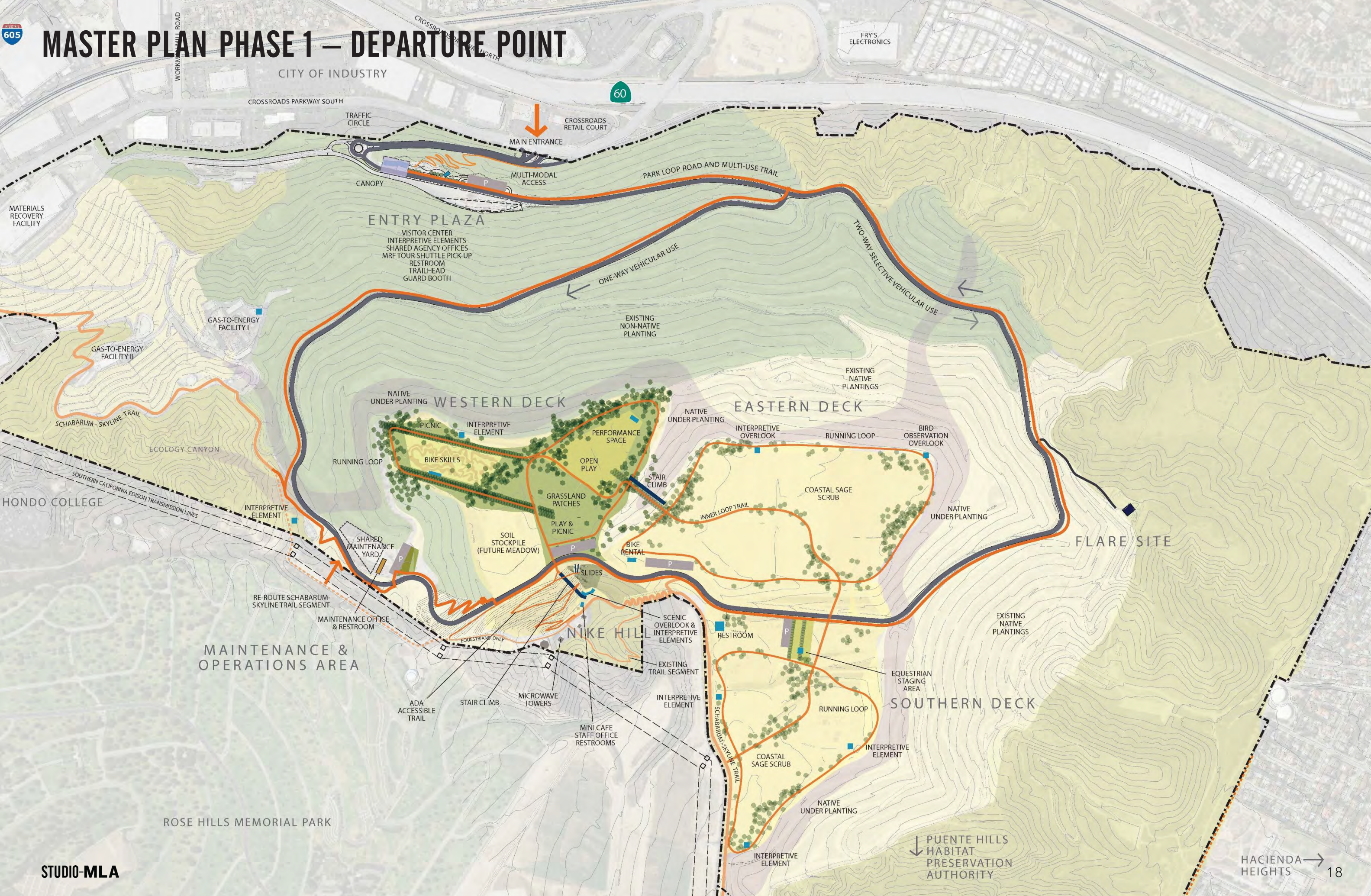
Built over +75 years in phases



MASTER PLAN PHASE 1 – DEPARTURE POINT

CITY OF INDUSTRY

FRY'S ELECTRONICS



MATERIALS RECOVERY FACILITY

RIO HONDO COLLEGE

ROSE HILLS MEMORIAL PARK

PUENTE HILLS HABITAT PRESERVATION AUTHORITY

2016 Master Plan Recap

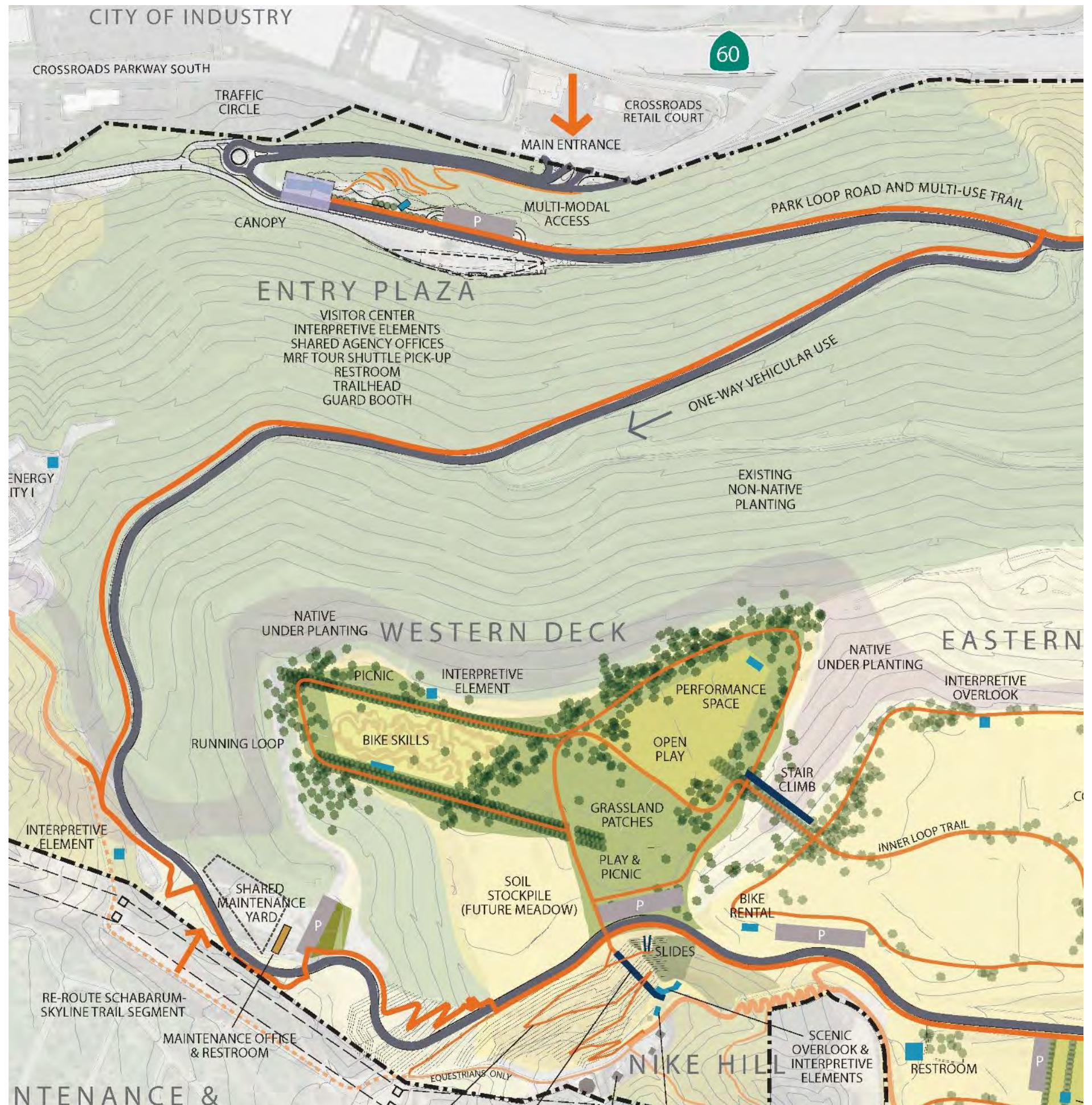
Program approved by the PEIR

Structures

- Visitor Education Center
- Restroom Facilities
- Staff Office
- Nike Hill Café and Overlook
- Shade + Picnic Kiosk
- Maintenance Yard Facilities

Infrastructure

- Loop Road
- Parking
- Site Security
- Shuttle System
- Utilities



2016 Master Plan Recap

Program approved by the PEIR

Recreation

Trails, Loops and Stair Climbs
Children's Play Area
Slides



Nature Play
Performance Space(s)
Bike Skills + Bike Rentals



Fitness Zones + Exercise Areas
Picnic Areas
General Park Amenities



2016 Master Plan Recap

Program approved by the PEIR

Interpretive

Plant Nursery + Habitat growth

Bird and Nature Observation

Civic and Temporary Art



PUENTE HILLS LANDFILL



PUENTE HILLS LANDFILL HISTORY

1957

Privately-owned
San Gabriel Valley Dump

1970

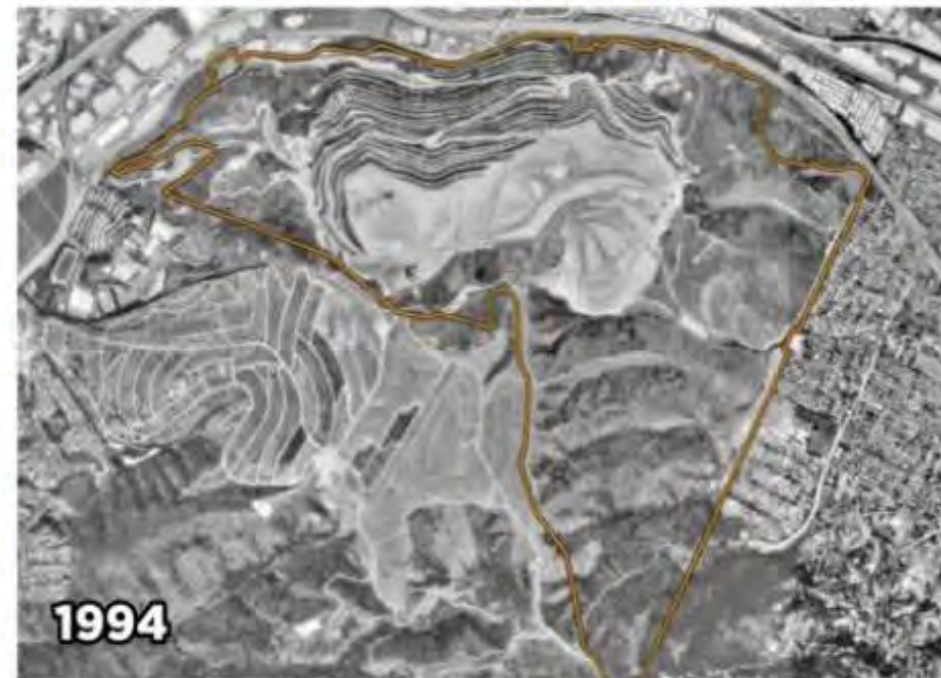
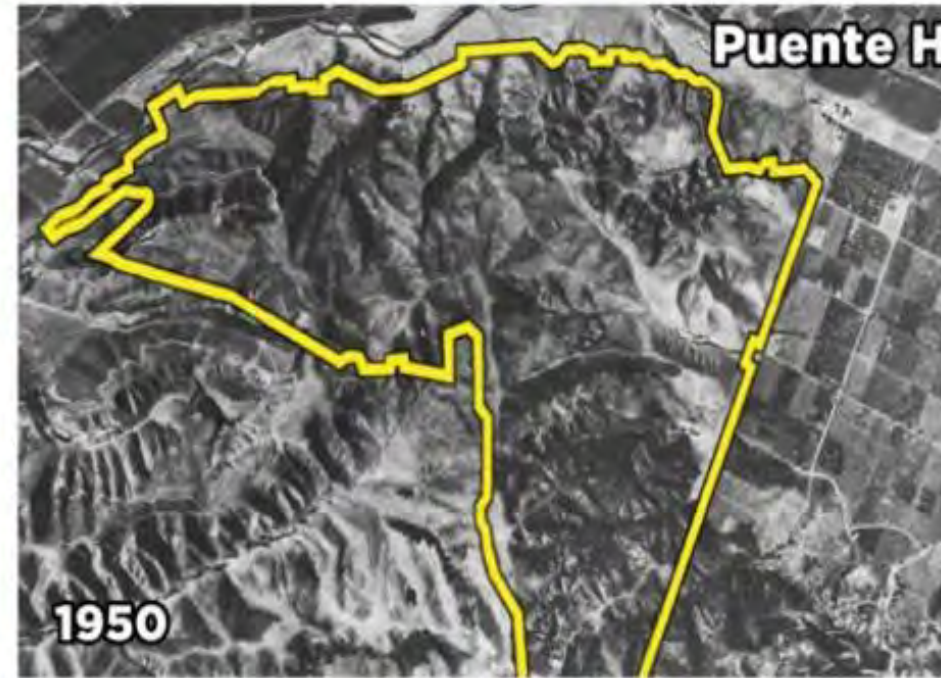
Purchased By
Sanitation Districts

1983

CUP No. 2235 –(1) issued.
First of 3 10- year CUPs

2013

Landfill Closes



Fresh Kills

Staten Island, New York

A place for wildlife, recreation, science, education, and art.

Only accessible during scheduled park programs which provide early access to learning and exploration opportunities.



2200 acres



“The birds don’t know it’s a landfill underneath here, they don’t care.”

-Cait Field, Scientist at Fresh Kills



the existing site is a closed landfill, without public access or amenity

within a few years, areas of the site can be reclaimed as useful public landscapes

soon thereafter, new park drives can connect Richmond Avenue to the West Shore Expressway and allow access around the park

larger areas of the park will be reclaimed as public parkland over time

restaurants, cultural facilities, sports amenities and other recreational uses will activate the site

a mature biomatrix within the next 30 years, Fresh Kills Park may be transformed into a fully sustainable, living park



2035

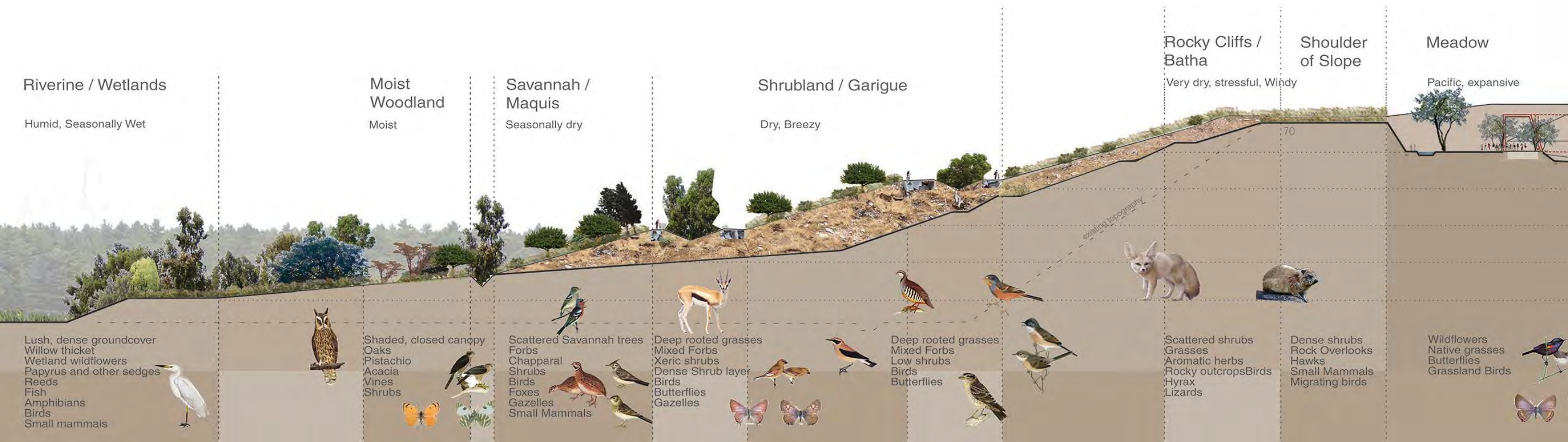
Ariel Sharon Park
Tel Aviv, Israel

2000 acres



Ariel Sharon Park

Tel Aviv, Israel



**South Coast Botanic Garden
Palos Verdes Peninsula, California**



South Coast Botanic Garden's Trashy Past





CRICA 1975

MOUNT WILSON

MOUNT SAN ANTONIO

SAN GABRIEL RIVER

CITY OF INDUSTRY

SAN JOSE CREEK

60

SLOPE

LANDSCAPE AND IRRIGATION

DRAINAGE CONVEYANCE

FINAL COVER

DRONE IMAGE LOOKING NORTH WEST

Puente Hills Landfill Environmental Control Systems

Final Cover

- Designed to minimize water infiltration and landfill gas emissions.

Drainage System

- Designed to eliminate ponding and direct stormwater off site without eroding the final cover.

Landscape & Irrigation

- Ensure irrigation/vegetation maintains final cover integrity.

Water Quality Monitoring & Control

- Refuse contacted water and gas system generated condensate capture and proper disposal to protection of local groundwater.

Landfill Gas Monitoring & Control

- Gas capture so there are no surface emissions or off-site migration.



FINAL COVER



Clean procedure in place for monitoring, repairing, documenting, and testing.

Hydraulic Conductivity

Field Density and Moisture Content

QUESTIONS

What specific measures do we have to take?

How well do these soils support vegetation?

How do we go about planting - trees? mounds? edible species?

How is hardscape incorporated into this profile?

Is the soil stockpile appropriate for Bike Skills? How do these operationally work together?

SURFACE WATER DRAINAGE



Annually perform a physical inspection of each facility, describe the areas where repairs to the drainage facilities are required, and determine corrective measures to remedy deficiencies. Routine maintenance activities will be performed during the summer prior to the onset of wet weather, and if necessary, following major storm events.

The debris basins are designed to accommodate run-off during a 100-year/ 24-hour precipitation event.

The holding facilities must be emptied immediately following each storm or otherwise managed to maintain the design capacity.

Inspected at least monthly in accordance with the Waste Discharge Requirement.

VEGETATION COVER



VEGETATION ON THE LANDFILL SERVES PRIMARILY TO

- Protect surface soils against water and wind erosion.
- Provide control of moisture in the cover through enhanced evapotranspiration.
- Provide aesthetic enhancement.

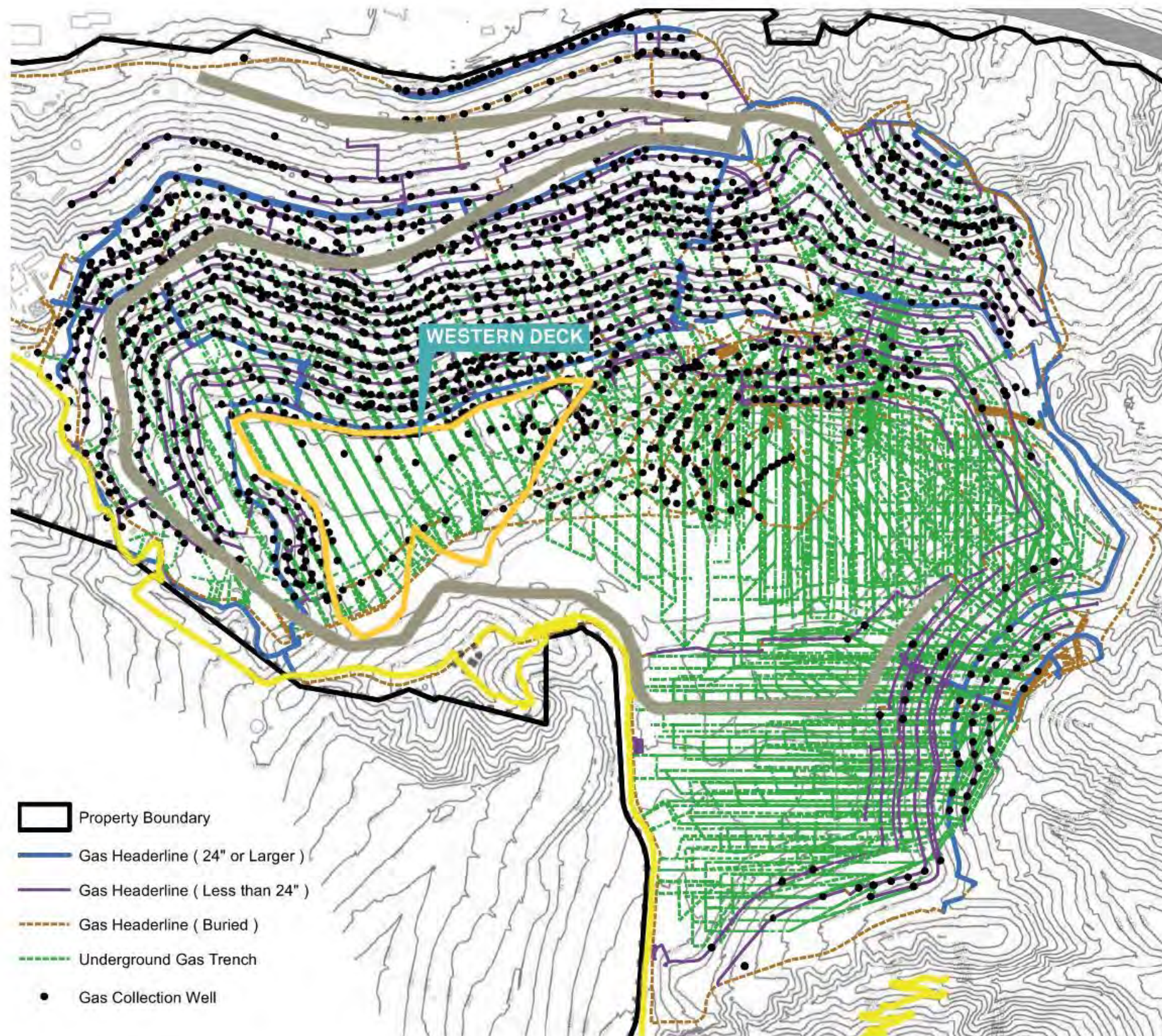
VEGETATION MUST

- Ensure rooting depth does not exceed the depth of material Function as a barrier layer;
- Tolerate effects of landfill gas;
- Resist fires, insects, and pests;
- Adapt to the climate;
- Persist and have a high percentage of surface coverage;
- Consider long-term maintenance needs

QUESTIONS

What is the depth of the barrier layer? Is this consistent?
Are there approved plant lists? Or planting details?

LANDFILL GAS



The existing landfill gas collection system consists of an extensive network of vertical wells and horizontal trenches placed throughout the refuse fill. The gas wells and trenches are interconnected through a series of header pipelines and valves used to control and manage the vacuum to any portion of the fill. The gas wells, trenches, and header pipelines are adjusted, modified, and expanded as necessary to ensure effective site-wide emissions and migration control for compliance with existing local and federal regulatory requirements.

MAINTENANCE SCHEDULE

Requires quarterly monitoring of ambient air, surface gas, landfill gas, perimeter probes, combustion efficiency, component leak checking, and well head monitoring.

QUESTIONS

What do we need to accommodate for in the design?
How will the underground trenching impact the design of the deck and the Loop Road?

WAYS TO PARTICIPATE



EVENTS.



YOUTH AT WORK PROGRAM.

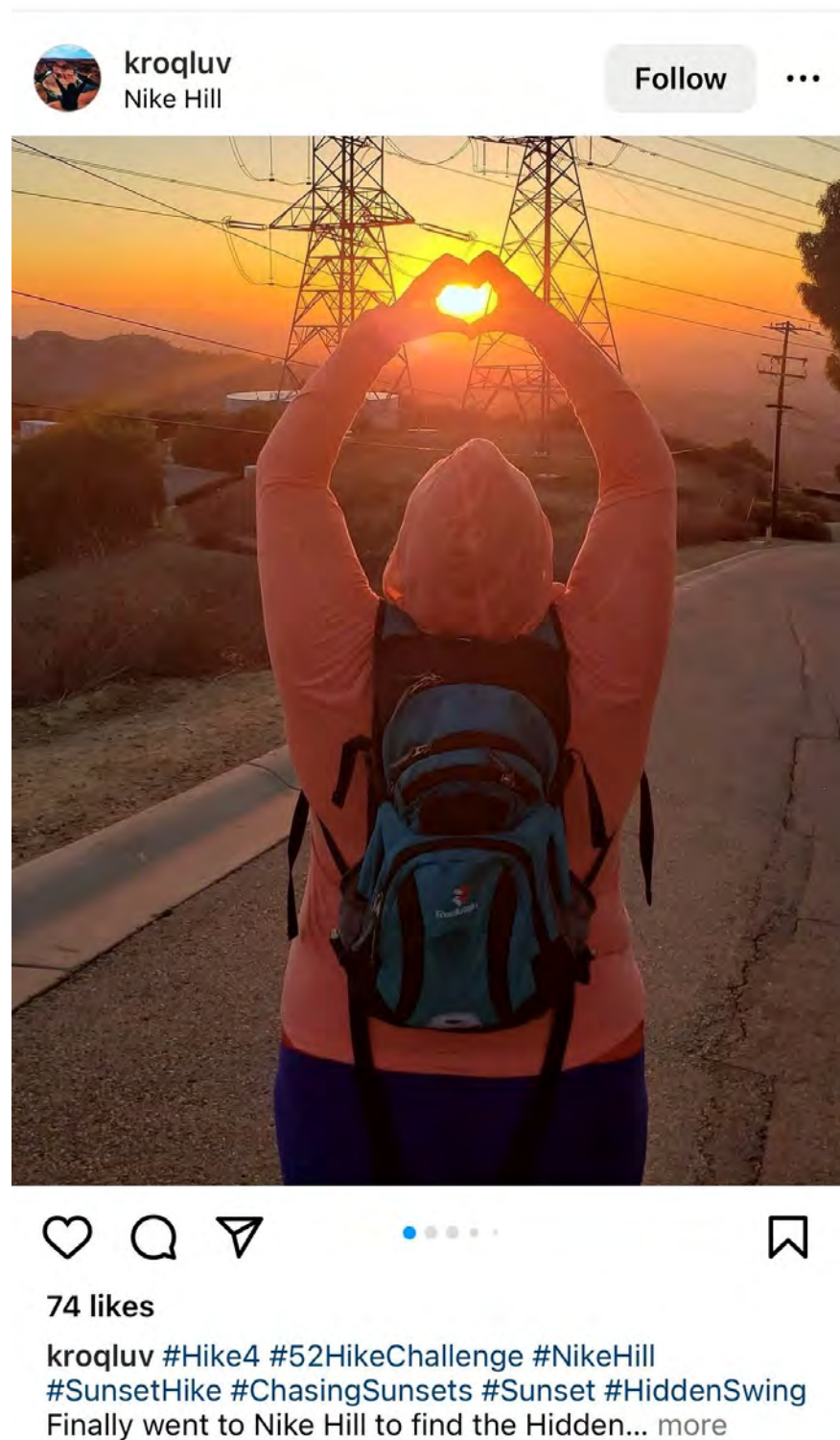


WORKSHOPS.



SET UP A MEETING.

Connect Via Social Media or Email



We want to hear from you!

PUENTEHILLSLANDFILLPARK.ORG

info@puentehillslandfillpark.org

f i t @PHLandfillPark

YOU CAN ALSO REACH OUR TEAM LEADERS @

Megan Horn

Consultant Team, Studio-MLA
Project Director
megan@Studio-MLA.com

Daniel Abratte

LA County Parks and Recreation
Project Manager
dabratte@parks.lacounty.gov