

WORKMANMILL TRAILHEAD

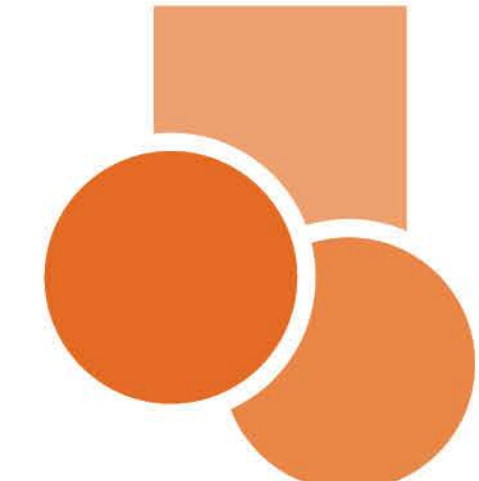
How should the visitor center influence the overall park experience?

0.5 Acres



Phase One includes the following elements:

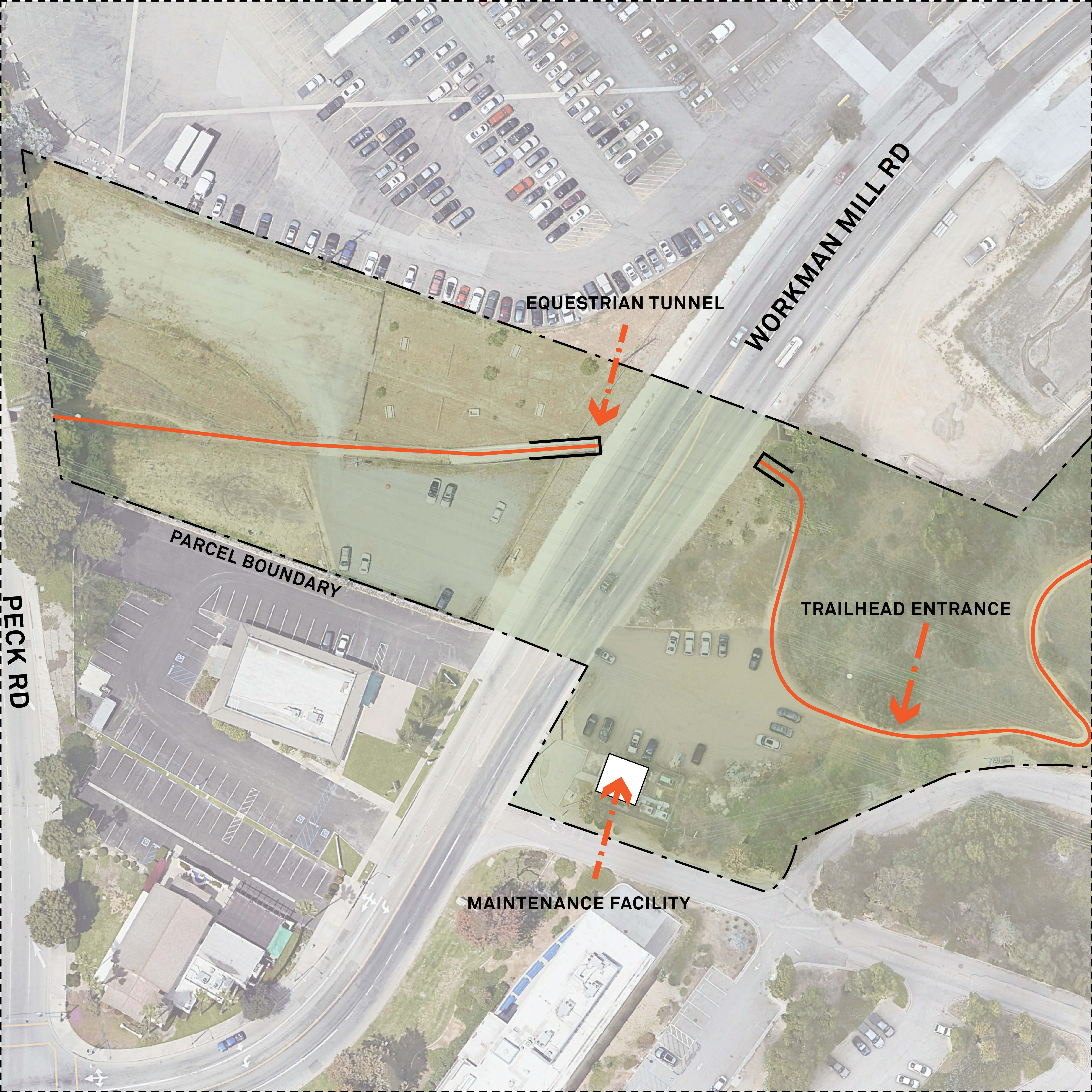
- Park Access and Entry
- ADA-Compliant Trails
- Shuttle Connections
- Community Character
- Landscape Improvements
- Safety Kiosks
- Restroom Facilities



Participate in this exercise by arranging the trailhead elements onto the map. If a certain feature (gateway, art, signage, etc.) is important to you, give it more space!

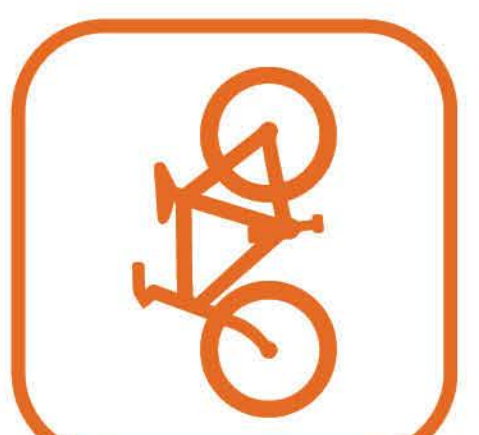


→ What aspects of the park design should be continued at the trailhead?
 → How are you creating a safe experience for different users?
 → How much space should be given to the parking areas?

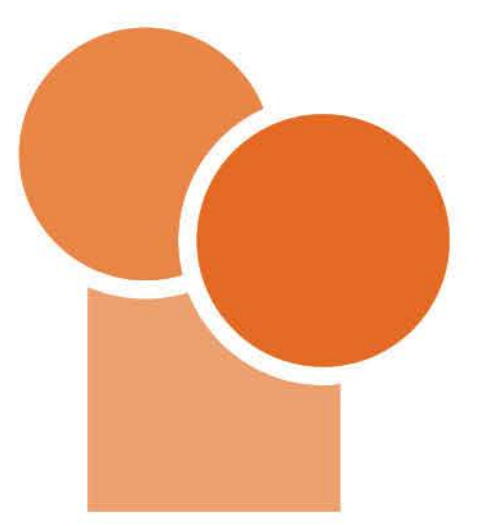


What does your design for the trailhead look like?

- What aspects of the park design should be continued at the trailhead?
- How are you creating a safe experience for different users?
- How much space should be given to the parking areas?



Participate in this exercise by arranging the trailhead elements onto the map. If a certain feature (gateway, art, signage, etc.) is important to you, give it more space!



WORKMANMILL TRAILHEAD

How should the visitor center influence the overall park experience?

0.5 Acres



Phase One includes the following elements:

- Park Access and Entry
- ADA-Compliant Trails
- Shuttle Connections
- Community Character
- Landscape Improvements
- Signage / v
- Parking Areas
- Safety Kiosks
- Restroom Facilities

WORKMAN MILL ENTRY

SEATING

SEATING

HORSE REST

EMERGENCY KIOSK

PUBLIC ART

RAIN GARDEN

TRANSIT DROP-OFF

SEATING

SEATING

SHADE

CROSSWALK

VENDOR SPACE

SIGNAGE

SIGNAGE

SHADE

SHADE

FOOD TRUCK

WATER STATION

BIKE HUB

RESTROOM

ENTRY SIGN

PARKING AREA
20 SPACES

